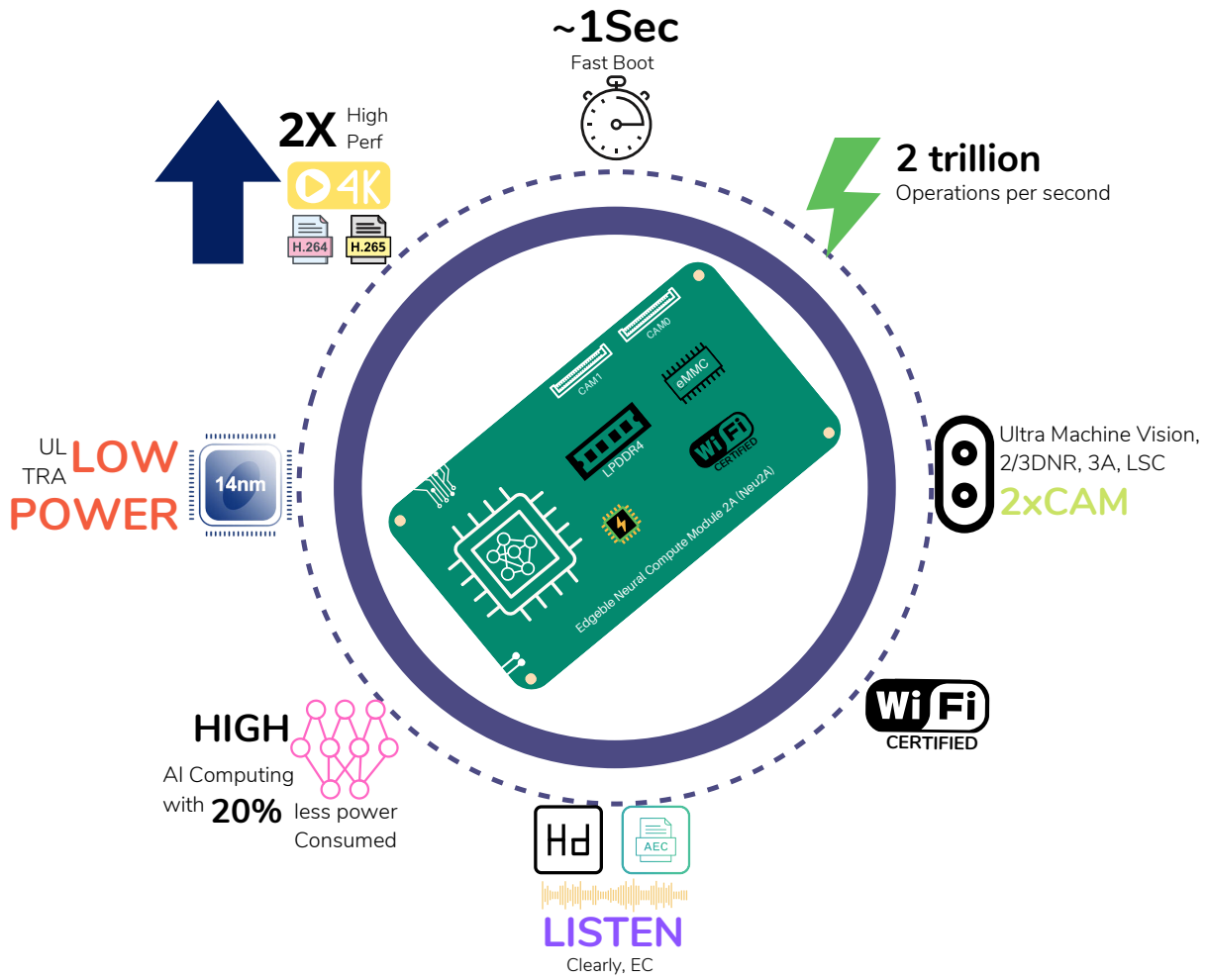


NCM2A/2B

Ultra vision Neurally fast 2TOPS Neural Compute Module



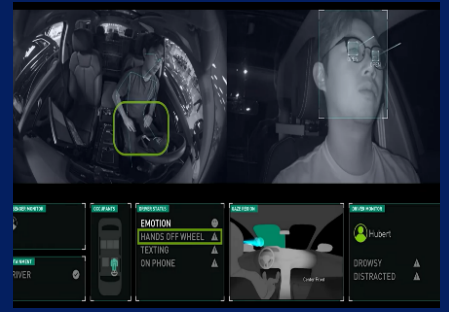
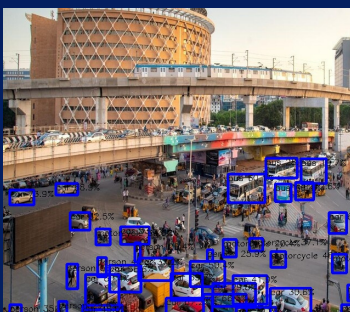
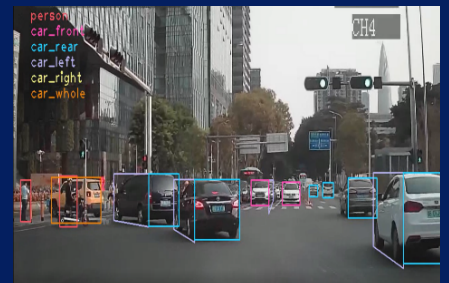
In-house Object Detection

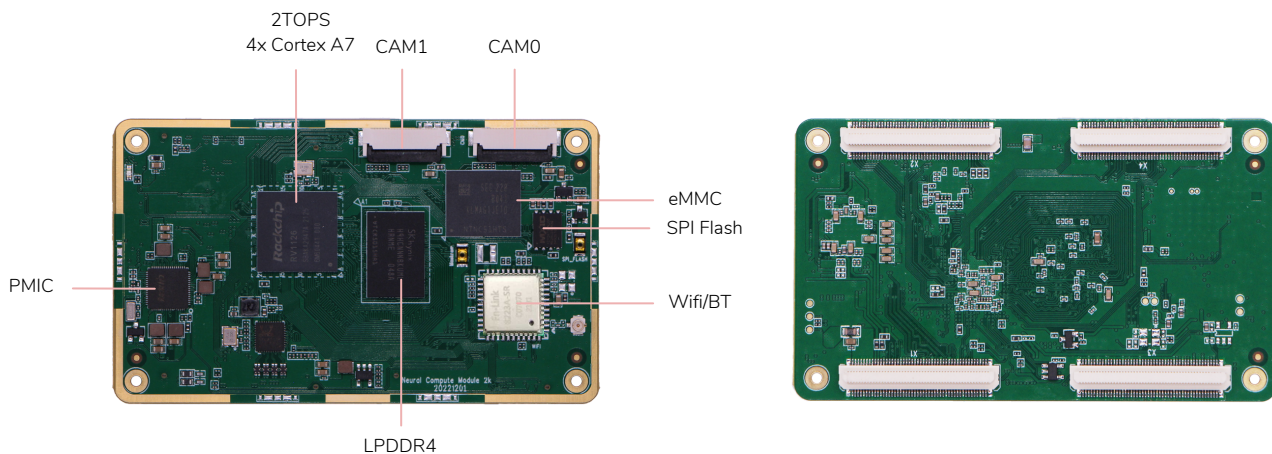


Object Detection In Construction Fields



Vehicle ADAS/DMS





Neural Accelerator Family	Neu2A - Consumer grade, 0°C to +80°C Neu2B - Industrial grade, -40°C to +85°C
Silicon	4x Core ARM Cortex-A7, 1.5GHz, 1x RISC-V MCU, 200MHz SMIC 14nm Low power, Secure Engine - Encryption, Decryption
AI Accelerator	2 TOPS with INT8/INT16
Image Signal	14M ISP, 3 Sensor Input with 3F HDR
Encoder	Smart H.264/H.265 with 4K30 decoder
Decoder	4K@60fps
Video Interfaces	2x MIPI DSI with 4-lane, up to 1080p@60fps 2x MIPI CSI 2 with 4-lane, 2.5Gbps/lane
I/O Interfaces	SPI/NAND Flash RGMII with TSO network acceleration USB 2.0 Host/OTG 2x SDIO 3.0 8ch I2S with TDM/PDM 2ch I2S Fast booting
On Module Interfaces	2x MIPI CS2 4-lane Dual-Band Industrial range WiFi/BT module 1GB/2GB LPDDR4, inline ECC 16GB eMMC Flash
Audio	8ch I2S with TDM/PDM
Dimensions	85 x 50 x 6 mm
Carrier Board	Compact sized Industrial Carrier board.
Software	Linux - 5.10, Mainline Linux, Pre-trained AI Accelerator
Certifications	Wifi/BT, RED/FCC/IC/TELEC/SRRC/RCM

A Comprehensive Pre-trained AI Accelerator Platform

Accelerate Your Edge AI deployments with Secure, Scalable, Fast, and Fail-safe Edgeble Pre-trained AI Accelerator Platform.



www.edgeble.ai
info@edgeble.ai

